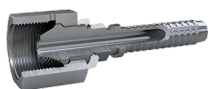




## HF - Female TYPE-M



Part no.	Descrizione	Pcs/box	ID mm	Filetto	Dimensione tubo	HEX-CH	HEX-CH	WP (psi)	Tubi
HFB1B0	9/16 F-TYPE M B/A 5/32	10	2.5	9/16-18 UNF	DN4	5/32	19	30000	2020, 2030, 2120
HFB8B0	9/16 F-TYPE M B/A 5/32 SS	10	2.5	9/16-18 UNF	DN4	5/32	19	30000	2020, 2030, 2120
HFE8B0	9/16 F-TYPE M E/C 5/32 SS	10	1.8	9/16-18 UNF	DN4	5/32	19	58000	2040, 2140, 2060
HFA1B1	9/16 F-TYPE M A 3/16	10	3	9/16-18 UNF	DN5	3/16	19	30000	2021, 2121
HFA8B1	9/16 F-TYPE M A 3/16 SS	10	3	9/16-18 UNF	DN5	3/16	19	30000	2021, 2121
HFL8B1	9/16 F-TYPE M L 3/16 SS	0	2.5	9/16-18 UNF	DN5	3/16	19	30000	2341
HFC1B1	9/16 F-TYPE M C 3/16	10	2.5	9/16-18 UNF	DN5	3/16	19	30000	2241, 2041, 2141, 2441
HFC8B1	9/16 F-TYPE M C 3/16 SS	10	2.5	9/16-18 UNF	DN5	3/16	19	30000	2241, 2041, 2141, 2441
FFF8B1	9/16 F-TYPE M F/E 3/16 SS	10	2.4	9/16-18 UNF	DN5	3/16	19	45000	2061, 2161, 2261
HFB8B2	9/16 F-TYPE M B/A 1/4 SS	10	4	9/16-18 UNF	DN6	1/4	19	24000	2022, 2032
HFB1B2	9/16 F-TYPE M B/A 1/4	10	4	9/16-18 UNF	DN6	1/4	19	24000	2022, 2032
HFC8B2	9/16 F-TYPE M C 1/4 SS	10	3.5	9/16-18 UNF	DN6	1/4	19	30000	2042
HFC1B2	9/16 F-TYPE M C 1/4	10	3.5	9/16-18 UNF	DN6	1/4	19	30000	2042
FFF8B2	9/16 F-TYPE M F 1/4 SS	10	3	9/16-18 UNF	DN6	1/4	19	45000	2162
HFA873	3/4 F-TYPE M A 5/16 SS	10	5.5	3/4-16 UNF	DN8	5/16	27	22000	2023, 2123
HFC173	3/4 F-TYPE M C/B 5/16	10	4.5	3/4-16 UNF	DN8	5/16	27	22000	2033, 2043
HFC873	3/4 F-TYPE M C/B 5/16 SS	10	4.5	3/4-16 UNF	DN8	5/16	27	22000	2033, 2043
FFF173	3/4 F-TYPE M F/E 5/16	10	4.5	3/4-16 UNF	DN8	5/16	27	40000	2063, 2363, 2163
FFF873	3/4 F-TYPE M F/E 5/16 SS	10	4.5	3/4-16 UNF	DN8	5/16	27	40000	2063, 2363, 2163
FFF8C3	7/8 F-TYPE M F/E 5/16 SS	10	4.5	7/8-14 UNF	DN8	5/16	30	40000	2063, 2363, 2163
HFI873	3/4 F-TYPE M I/H 5/16 SS	10	4.5	3/4-16 UNF	DN8	5/16	27	46400	2263, 2083
HFI8C3	7/8 F-TYPE M I/H 5/16 SS	10	4.5	7/8-14 UNF	DN8	5/16	30	46400	2263, 2083
HFI8K3	1+1/8 F-TYPE M I/H 5/16 SS	10	4.5	1+1/8-12 UNF	DN8	5/16	36	46400	2263, 2083
HFB874	3/4 F-TYPE M B/A 3/8 SS	10	6.5	3/4-16 UNF	DN10	3/8	27	22000	2034, 2024
HFC874	3/4 F-TYPE M C 3/8 SS	10	5.5	3/4-16 UNF	DN10	3/8	27	22000	2044
HFA885	1 F-TYPE M A 1/2 SS	10	8.5	1-12 UNF	DN12	1/2	32	18000	2025
HFA185	1 F-TYPE M A 1/2	10	8.5	1-12 UNF	DN12	1/2	32	18000	2025

HFG885	1 F-TYPE M G/D/C/B 1/2 SS	10	7.5	1-12 UNF	DN12	1/2	32	22000	2245, 2035, 2045, 2055, 2145
HFF885	1 F-TYPE M F/E 1/2 SS	10	7.5	1-12 UNF	DN12	1/2	32	30000	2065, 2165
HFF185	1 F-TYPE M F/E 1/2	10	7.5	1-12 UNF	DN12	1/2	32	30000	2065, 2165
HFI885	1 F-TYPE M I/H 1/2 SS	10	7.5	1-12 UNF	DN12	1/2	32	43600	2265, 2085
HFE8F7	1+5/16 F-TYPE M E/G/C/B/A 3/4 SS	4	13	1+5/16-12 UN	DN20	3/4	46	24000	2047, 2057, 2067, 2167, 2037
HFC8F8	1+5/16 F-TYPE M C 1 SS	4	17.5	1+5/16-12 UN	DN25	1	46	22000	2048

*I valori e le dimensioni mostrate possono essere modificati senza preavviso per migliorare le prestazioni e l'affidabilità del prodotto.*

*Transfer Oil S.p.A. non si assume alcuna responsabilità per imprecisioni o errori che appaiono in questa scheda tecnica.*

*Data documento: 22/12/2024*

*www.transferoil.com*