

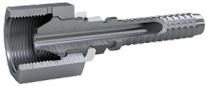


TRANSFER OIL

Pure Fluid Attitude



HF - Female TYPE-M



Part no.	Description	Minimum pack quantity	Insert tail ID mm	Thread F	Hose size	HEX-CH	HEX-CH	WP (psi)	Hoses
HFB1B0	9/16 F-TYPE M B/A 5/32	10	2.5	9/16-18 UNF	DN4	5/32	19	30000	2020, 2030, 2120
HFB8B0	9/16 F-TYPE M B/A 5/32 SS	10	2.5	9/16-18 UNF	DN4	5/32	19	30000	2020, 2030, 2120
HFE8B0	9/16 F-TYPE M E/C 5/32 SS	10	1.8	9/16-18 UNF	DN4	5/32	19	58000	2040, 2140, 2060
HFA1B1	9/16 F-TYPE M A 3/16	10	3	9/16-18 UNF	DN5	3/16	19	30000	2021, 2121
HFA8B1	9/16 F-TYPE M A 3/16 SS	10	3	9/16-18 UNF	DN5	3/16	19	30000	2021, 2121
HFL8B1	9/16 F-TYPE M L 3/16 SS	0	2.5	9/16-18 UNF	DN5	3/16	19	30000	2341
HFC1B1	9/16 F-TYPE M C 3/16	10	2.5	9/16-18 UNF	DN5	3/16	19	30000	2241, 2041, 2141, 2441
HFC8B1	9/16 F-TYPE M C 3/16 SS	10	2.5	9/16-18 UNF	DN5	3/16	19	30000	2241, 2041, 2141, 2441
HFF8B1	9/16 F-TYPE M F/E 3/16 SS	10	2.4	9/16-18 UNF	DN5	3/16	19	45000	2061, 2161, 2261
HFB8B2	9/16 F-TYPE M B/A 1/4 SS	10	4	9/16-18 UNF	DN6	1/4	19	24000	2022, 2032
HFB1B2	9/16 F-TYPE M B/A 1/4	10	4	9/16-18 UNF	DN6	1/4	19	24000	2022, 2032
HFC8B2	9/16 F-TYPE M C 1/4 SS	10	3.5	9/16-18 UNF	DN6	1/4	19	30000	2042
HFC1B2	9/16 F-TYPE M C 1/4	10	3.5	9/16-18 UNF	DN6	1/4	19	30000	2042
HFF8B2	9/16 F-TYPE M F 1/4 SS	10	3	9/16-18 UNF	DN6	1/4	19	45000	2162
HFA873	3/4 F-TYPE M A 5/16 SS	10	5.5	3/4-16 UNF	DN8	5/16	27	22000	2023, 2123
HFC173	3/4 F-TYPE M C/B 5/16	10	4.5	3/4-16 UNF	DN8	5/16	27	22000	2033, 2043
HFC873	3/4 F-TYPE M C/B 5/16 SS	10	4.5	3/4-16 UNF	DN8	5/16	27	22000	2033, 2043
HFF173	3/4 F-TYPE M F/E 5/16	10	4.5	3/4-16 UNF	DN8	5/16	27	40000	2063, 2363, 2163
HFF873	3/4 F-TYPE M F/E 5/16 SS	10	4.5	3/4-16 UNF	DN8	5/16	27	40000	2063, 2363, 2163
HFF8C3	7/8 F-TYPE M F/E 5/16 SS	10	4.5	7/8-14 UNF	DN8	5/16	30	40000	2063, 2363, 2163
HFI873	3/4 F-TYPE M I/H 5/16 SS	10	4.5	3/4-16 UNF	DN8	5/16	27	46400	2263, 2083
HFI8C3	7/8 F-TYPE M I/H 5/16 SS	10	4.5	7/8-14 UNF	DN8	5/16	30	46400	2263, 2083
HFI8K3	1+1/8 F-TYPE M I/H 5/16 SS	10	4.5	1+1/8-12 UNF	DN8	5/16	36	46400	2263, 2083
HFB874	3/4 F-TYPE M B/A 3/8 SS	10	6.5	3/4-16 UNF	DN10	3/8	27	22000	2034, 2024
HFC874	3/4 F-TYPE M C 3/8 SS	10	5.5	3/4-16 UNF	DN10	3/8	27	22000	2044
HFA885	1 F-TYPE M A 1/2 SS	10	8.5	1-12 UNF	DN12	1/2	32	18000	2025
HFA185	1 F-TYPE M A 1/2	10	8.5	1-12 UNF	DN12	1/2	32	18000	2025
HFG885	1 F-TYPE M G/D/C/B 1/2 SS	10	7.5	1-12 UNF	DN12	1/2	32	22000	2245, 2035, 2045, 2055, 2145
HFF885	1 F-TYPE M F/E 1/2 SS	10	7.5	1-12 UNF	DN12	1/2	32	30000	2065, 2165
HFF185	1 F-TYPE M F/E 1/2	10	7.5	1-12 UNF	DN12	1/2	32	30000	2065, 2165
HFI885	1 F-TYPE M I/H 1/2 SS	10	7.5	1-12 UNF	DN12	1/2	32	43600	2265, 2085
HFE8F7	1+5/16 F-TYPE M E/G/C/B/A 3/4 SS	4	13	1+5/16-12 UN	DN20	3/4	46	24000	2047, 2057, 2067, 2167, 2037
HFC8F8	1+5/16 F-TYPE M C 1 SS	4	17.5	1+5/16-12 UN	DN25	1	46	22000	2048

Dimensions and values shown may be changed without prior notice to improve product performances and reliability.
Transfer Oil S.p.A. assumes no liability on mistakes nor errors appearing in this spec sheet.
Document date: 28/01/2025
www.transferoil.com