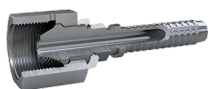




HF - 内螺纹 TYPE-M



| 零件号 | 产品描述 | 最小包装量 | 尾芯尺寸 ID mm | 螺纹规格 F | 软管规格 | HEX-CH | HEX-CH | WP (psi) | 软管 |
|--------|----------------------------------|-------|------------|--------------|------|--------|--------|----------|------------------------------|
| HFB1B0 | 9/16 F-TYPE M B/A 5/32 | 10 | 2.5 | 9/16-18 UNF | DN4 | 5/32 | 19 | 30000 | 2020, 2030, 2120 |
| HFB8B0 | 9/16 F-TYPE M B/A 5/32 SS | 10 | 2.5 | 9/16-18 UNF | DN4 | 5/32 | 19 | 30000 | 2020, 2030, 2120 |
| HFE8B0 | 9/16 F-TYPE M E/C 5/32 SS | 10 | 1.8 | 9/16-18 UNF | DN4 | 5/32 | 19 | 58000 | 2040, 2140, 2060 |
| HFA1B1 | 9/16 F-TYPE M A 3/16 | 10 | 3 | 9/16-18 UNF | DN5 | 3/16 | 19 | 30000 | 2021, 2121 |
| HFA8B1 | 9/16 F-TYPE M A 3/16 SS | 10 | 3 | 9/16-18 UNF | DN5 | 3/16 | 19 | 30000 | 2021, 2121 |
| HFL8B1 | 9/16 F-TYPE M L 3/16 SS | 0 | 2.5 | 9/16-18 UNF | DN5 | 3/16 | 19 | 30000 | 2341 |
| HFC1B1 | 9/16 F-TYPE M C 3/16 | 10 | 2.5 | 9/16-18 UNF | DN5 | 3/16 | 19 | 30000 | 2241, 2041, 2141, 2441 |
| HFC8B1 | 9/16 F-TYPE M C 3/16 SS | 10 | 2.5 | 9/16-18 UNF | DN5 | 3/16 | 19 | 30000 | 2241, 2041, 2141, 2441 |
| HFF8B1 | 9/16 F-TYPE M F/E 3/16 SS | 10 | 2.4 | 9/16-18 UNF | DN5 | 3/16 | 19 | 45000 | 2061, 2161, 2261 |
| HFB1B2 | 9/16 F-TYPE M B/A 1/4 | 10 | 4 | 9/16-18 UNF | DN6 | 1/4 | 19 | 24000 | 2022, 2032 |
| HFB8B2 | 9/16 F-TYPE M B/A 1/4 SS | 10 | 4 | 9/16-18 UNF | DN6 | 1/4 | 19 | 24000 | 2022, 2032 |
| HFC8B2 | 9/16 F-TYPE M C 1/4 SS | 10 | 3.5 | 9/16-18 UNF | DN6 | 1/4 | 19 | 30000 | 2042 |
| HFC1B2 | 9/16 F-TYPE M C 1/4 | 10 | 3.5 | 9/16-18 UNF | DN6 | 1/4 | 19 | 30000 | 2042 |
| HFF8B2 | 9/16 F-TYPE M F 1/4 SS | 10 | 3 | 9/16-18 UNF | DN6 | 1/4 | 19 | 45000 | 2162 |
| HFA873 | 3/4 F-TYPE M A 5/16 SS | 10 | 5.5 | 3/4-16 UNF | DN8 | 5/16 | 27 | 22000 | 2023, 2123 |
| HFC173 | 3/4 F-TYPE M C/B 5/16 | 10 | 4.5 | 3/4-16 UNF | DN8 | 5/16 | 27 | 22000 | 2033, 2043 |
| HFC873 | 3/4 F-TYPE M C/B 5/16 SS | 10 | 4.5 | 3/4-16 UNF | DN8 | 5/16 | 27 | 22000 | 2033, 2043 |
| HFF873 | 3/4 F-TYPE M F/E 5/16 SS | 10 | 4.5 | 3/4-16 UNF | DN8 | 5/16 | 27 | 40000 | 2063, 2363, 2163 |
| HFF173 | 3/4 F-TYPE M F/E 5/16 | 10 | 4.5 | 3/4-16 UNF | DN8 | 5/16 | 27 | 40000 | 2063, 2363, 2163 |
| HFF8C3 | 7/8 F-TYPE M F/E 5/16 SS | 10 | 4.5 | 7/8-14 UNF | DN8 | 5/16 | 30 | 40000 | 2063, 2363, 2163 |
| HFI873 | 3/4 F-TYPE M I/H 5/16 SS | 10 | 4.5 | 3/4-16 UNF | DN8 | 5/16 | 27 | 46400 | 2263, 2083 |
| HFI8C3 | 7/8 F-TYPE M I/H 5/16 SS | 10 | 4.5 | 7/8-14 UNF | DN8 | 5/16 | 30 | 46400 | 2263, 2083 |
| HFI8K3 | 1+1/8 F-TYPE M I/H 5/16 SS | 10 | 4.5 | 1+1/8-12 UNF | DN8 | 5/16 | 36 | 46400 | 2263, 2083 |
| HFB874 | 3/4 F-TYPE M B/A 3/8 SS | 10 | 6.5 | 3/4-16 UNF | DN10 | 3/8 | 27 | 22000 | 2034, 2024 |
| HFC874 | 3/4 F-TYPE M C 3/8 SS | 10 | 5.5 | 3/4-16 UNF | DN10 | 3/8 | 27 | 22000 | 2044 |
| HFA885 | 1 F-TYPE M A 1/2 SS | 10 | 8.5 | 1-12 UNF | DN12 | 1/2 | 32 | 18000 | 2025 |
| HFA185 | 1 F-TYPE M A 1/2 | 10 | 8.5 | 1-12 UNF | DN12 | 1/2 | 32 | 18000 | 2025 |
| HFG885 | 1 F-TYPE M G/D/C/B 1/2 SS | 10 | 7.5 | 1-12 UNF | DN12 | 1/2 | 32 | 22000 | 2245, 2035, 2045, 2055, 2145 |
| HFF885 | 1 F-TYPE M F/E 1/2 SS | 10 | 7.5 | 1-12 UNF | DN12 | 1/2 | 32 | 30000 | 2065, 2165 |
| HFF185 | 1 F-TYPE M F/E 1/2 | 10 | 7.5 | 1-12 UNF | DN12 | 1/2 | 32 | 30000 | 2065, 2165 |
| HFI885 | 1 F-TYPE M I/H 1/2 SS | 10 | 7.5 | 1-12 UNF | DN12 | 1/2 | 32 | 43600 | 2265, 2085 |
| HFE8F7 | 1+5/16 F-TYPE M E/G/C/B/A 3/4 SS | 4 | 13 | 1+5/16-12 UN | DN20 | 3/4 | 46 | 24000 | 2047, 2057, 2067, 2167, 2037 |
| HFC8F8 | 1+5/16 F-TYPE M C 1 SS | 4 | 17.5 | 1+5/16-12 UN | DN25 | 1 | 46 | 22000 | 2048 |

为提高产品性能和可靠性，所示尺寸和数值可在不事先通知的情况下更改。

Transfer Oil S.p.A.对本规格表中出现的错误不承担任何责任。

文本日期: 11/04/2025

www.transferoil.com