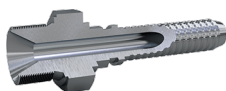




## HP - BSPP Male



Part no.	Descrizione	Pcs/box	ID mm	Filetto	Dimensione tubo	HEX-CH	HEX-CH	WP (psi)	Tubi
HPB120	1/4 M-BSPP B/A 5/32	10	2.5	1/4-19 GAS	DN4	5/32	14	22000	2020, 2030, 2120
HPC100	1/8 M-BSPP C 5/32	10	1.8	1/8-28 GAS	DN4	5/32	10	31900	2040, 2140
HPA101	1/8 M-BSPP A 3/16	10	3	1/8-28 GAS	DN5	3/16	10	22001	2021, 2121
HPA121	1/4 M-BSPP A 3/16	10	3	1/4-19 GAS	DN5	3/16	14	22000	2021
HPC121	1/4 M-BSPP C 3/16	10	2.5	1/4-19 GAS	DN5	3/16	14	26100	2241, 2041, 2141, 2441
HPC821	1/4 M-BSPP C 3/16 SS	10	2.5	1/4-19 GAS	DN5	3/16	14	26100	2241, 2041, 2141, 2441
HPB102	1/8 M-BSPP B/A 1/4	10	4	1/8-28 GAS	DN6	1/4	10	22000	2022, 2032
HPB122	1/4 M-BSPP B/A 1/4	10	4	1/4-19 GAS	DN6	1/4	14	22000	2022, 2032
HPB142	3/8 M-BSPP B/A 1/4	10	4	3/8-19 GAS	DN6	1/4	17	22000	2022, 2032
HPC122	1/4 M-BSPP C 1/4	10	3.5	1/4-19 GAS	DN6	1/4	14	24000	2042
HPA123	1/4 M-BSPP A 5/16	10	5.5	1/4-19 GAS	DN8	5/16	14	22000	2023, 2123
HPA143	3/8 M-BSPP A 5/16	10	5.5	3/8-19 GAS	DN8	5/16	17	22000	2023, 2123
HPC123	1/4 M-BSPP C/B 5/16	10	4.5	1/4-19 GAS	DN8	5/16	14	22000	2033, 2043
HPC143	3/8 M-BSPP C/B 5/16	10	4.5	3/8-19 GAS	DN8	5/16	17	24000	2033, 2043
HPB144	3/8 M-BSPP B/A 3/8	10	6.5	3/8-19 GAS	DN10	3/8	17	22000	2034, 2024
HPC144	3/8 M-BSPP C 3/8	10	5.5	3/8-19 GAS	DN10	3/8	17	22000	2044

*I valori e le dimensioni mostrate possono essere modificati senza preavviso per migliorare le prestazioni e l'affidabilità del prodotto.  
Transfer Oil S.p.A. non si assume alcuna responsabilità per imprecisioni o errori che appaiono in questa scheda tecnica.*

*Data documento: 22/12/2024*

*www.transferoil.com*