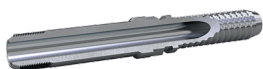




## HL - Male MP



| Part no. | Descrizione                  | Pcs/box | ID mm | Filetto        | Dimensione tubo | HEX-CH | HEX-CH | WP (psi) | Tubi                         |
|----------|------------------------------|---------|-------|----------------|-----------------|--------|--------|----------|------------------------------|
| HLB142   | 3/8 M-MP B 1/4               | 0       | 4     | 3/8-24 UNF LH  | DN6             | 1/4    | 0      | 22500    | 2022, 2032                   |
| HLB842   | 3/8 M-MP B 1/4 SS            | 0       | 4     | 3/8-24 UNF LH  | DN6             | 1/4    | 0      | 22500    | 2022, 2032                   |
| HLC841   | 3/8 M-MP C 3/16 SS           | 0       | 3.5   | 3/8-24 UNF LH  | DN6             | 3/16   | 0      | 22500    | 2041                         |
| HLC842   | 3/8 M-MP C 1/4 SS            | 0       | 3.5   | 3/8-24 UNF LH  | DN6             | 1/4    | 0      | 22500    | 2042                         |
| HLC1B3   | 9/16 M-MP C/B 5/16           | 10      | 4.5   | 9/16-18 UNF LH | DN8             | 5/16   | 0      | 22500    | 2033, 2043                   |
| HLC173   | 3/4 M-MP C/B 5/16            | 10      | 4.5   | 3/4-16 UNF LH  | DN8             | 5/16   | 0      | 22500    | 2033, 2043                   |
| HLC873   | 3/4 M-MP C/B 5/16 SS         | 10      | 4.5   | 3/4-16 UNF LH  | DN8             | 5/16   | 0      | 22500    | 2033, 2043                   |
| HLK8B3   | 9/16 M-MP TO BLAST 5/16 SS   | 0       | 5     | 9/16-18 UNF LH | DN8             | 5/16   | 15     | 22500    | 2043                         |
| HLF873   | 3/4 M-MP F/E 5/16 SS         | 10      | 4.5   | 3/4-16 UNF LH  | DN8             | 5/16   | 0      | 22500    | 2063, 2363, 2163             |
| HLI873   | 3/4 M-MP I/H 5/16 SS         | 10      | 4.5   | 3/4-16 UNF LH  | DN8             | 5/16   | 0      | 22500    | 2263                         |
| HLK8B4   | 9/16 M-MP LH TO BLAST 3/8 SS | 0       | 6.5   | 9/16-18 UNF LH | DN10            | 3/8    | 17     | 22500    | 2044                         |
| HLA8B5   | 9/16 M-MP A 1/2 SS           | 10      | 8.5   | 9/16-18 UNF LH | DN12            | 1/2    | 0      | 22500    | 2025                         |
| HLG8B5   | 9/16 M-MP G/D/C/B 1/2 SS     | 10      | 7.5   | 9/16-18 UNF LH | DN12            | 1/2    | 0      | 22500    | 2245, 2035, 2045, 2055, 2145 |
| HLG875   | 3/4 M-MP G/D/C/B 1/2 SS      | 10      | 7.5   | 3/4-16 UNF LH  | DN12            | 1/2    | 0      | 22500    | 2245, 2035, 2045, 2055, 2145 |
| HLF8B5   | 9/16 M-MP F/E 1/2 SS         | 10      | 7.5   | 9/16-18 UNF LH | DN12            | 1/2    | 0      | 22500    | 2065, 2165                   |
| HLF875   | 3/4 M-MP F/E 1/2 SS          | 10      | 7.5   | 3/4-16 UNF LH  | DN12            | 1/2    | 0      | 22500    | 2065, 2165                   |
| HLE887   | 1 M-MP E/G/C/B/A 3/4 SS      | 4       | 13    | 1-14 UNS LH    | DN20            | 3/4    | 0      | 22500    | 2047, 2057, 2067, 2037       |
| HLE888   | 1 M-MP E 1 SS                | 4       | 17.5  | 1-14 UNS LH    | DN25            | 1      | 0      | 20000    | 2068                         |

I valori e le dimensioni mostrate possono essere modificati senza preavviso per migliorare le prestazioni e l'affidabilità del prodotto.  
Transfer Oil S.p.A. non si assume alcuna responsabilità per imprecisioni o errori che appaiono in questa scheda tecnica.

Data documento: 19/11/2024

[www.transferoil.com](http://www.transferoil.com)